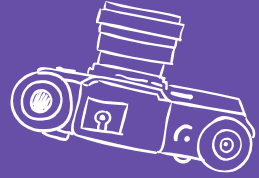


# ELEMENTARY ELP

## 2023-2024





# STAFF PLACEMENT 2023-2024

Kaitlin Lovell - K-2

Kristen Hartman - 3rd grade

Kate Florer - 4th grade

Mitzi Hetherton - 5th grade

Nikki Paradise-Williams - Instructional Coach-ELP Specialist

Feel free to contact any of us by phone or by email!



# CATEGORICAL FUNDING

- ✖ *Based on enrollment, not identified students*
- ✖ *Carryforward*
- ✖ *District-level position – match other departments*
- ✖ *4 teachers in 5 buildings*



# PROGRAM GOALS

*To meet the needs of high-ability students in the areas of:*

- ✖ *Critical thinking*
- ✖ *Creative problem solving*
- ✖ *Research*
- ✖ *Communication*
- ✖ *Social-emotional wellbeing*
- ✖ *Real-life problems*



# FOCUS ON NEEDS

*Academic Strength Area  
Social-Emotional (SIGMA)*



# LEVELS OF SERVICE

## STRENGTH AREA

- ✖ HUMANITIES - SAH
- ✖ STEM - SAS
- ✖ STRENGTH AREA - SA





STAR (\*)

## *Twice-Exceptional Students*

- ✖ *non-academic needs*
- ✖ *Part of ELP*
- ✖ *Adaptations*
- ✖ *Gifted + other needs = twice-exceptional*



K-2

# COLLABORATIVE MODEL

- ✖ *1 day per cycle*
- ✖ *Humanities: push-in/pull-out*
- ✖ *STEM: push-in/pull-out*
- ✖ *Collaboration with classroom teachers*
- ✖ *Flexible based on student needs*



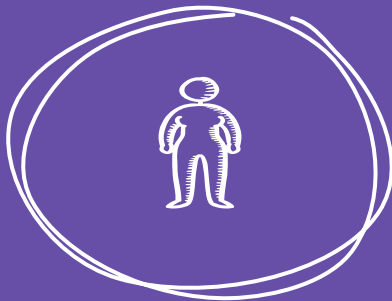
# 3-5 GRADE FULL-DAY SERVICE MODEL

- ✖ *1 day per cycle*
- ✖ *1/2 day Humanities*
- ✖ *1/2 day STEM*
- ✖ *Sigma (gifted-specific)*
- ✖ *Collaboration with classroom teachers*
- ✖ *Mirrors classroom schedule*
- ✖ *Contact time increased*

# ELP SCHEDULE

		Beaver Creek	Horizon	Lawson	Timber Ridge	Wallace
Kaitlin Lovell	K-2	Day 6	Day 5	Day 1	Day 2	Day 3
Kristen Hartman	3rd	Day 1	Day 2	Day 5	Day 3	Day 6
Kate Florer	4th	Day 2	Day 3	Day 6	Day 1	Day 5
Mitzi Hetherton	5th	Day 3	Day 6	Day 2	Day 5	Day 1

\*Day 4 - ELP collaboration, individual student needs, testing, etc.



# NOT A ONE (WO)MAN SHOW

*ELP Services are provided by ELP teachers and classroom teachers*

*Children have different needs, so programming will not look the same*

# DIFFERENTIATION

*Provides:*

*curriculum & instruction at appropriate level*

*Considers:*

*How students learn best*

*Readiness*

*Interest*

# INDIVIDUAL LEARNING PLAN (ILP)

## GRADES 3-5

- ✖ *Strengths*
- ✖ *Interests*
- ✖ *Academic Goal*
- ✖ *Social/Emotional Needs*
- ✖ *SIGMA*

# FRIENDS OF JOHNSTON ELP



## JCSD WEBSITE

- PARENT INFORMATION
- FAQ
- UPCOMING EVENTS
- LEGISLATION/ITAG PRESENTATIONS

### Student Services & Equity

English for Speakers of Other Languages

Extended Learning Program (ELP)

Academic Enrichment Opportunities

Frequently Asked Questions

Friends of Johnston ELP



Contact Us

FAQs

Handbook

Membership

Newsletters

Programs

Resources

# FJELP

*Advocacy & Support*  
*3 parent programs/year*  
*Communication*  
*Volunteer Opportunities*

## Connect with us!

Attend our  
programs and  
provide your  
feedback!



[FJELP Website](#)



[FJELP Facebook](#)



[FJELP Email](#)

*“Strength in numbers” – membership counts!*

Membership – Infinite Campus  
Fees/Optional Payments  
23/24 ELP Friends Membership (\$20)

Fall Program – Monday, November 6  
Helping Students Manage Perfection – Dr. Krista Brittain  
7 pm at JMS Media Center/Library